



ONE CONNECTION, UNLIMITED ACCESS:

How Exact Sciences Transformed Lab Integration with DORN

MADISON, WI

Building momentum: Exact Sciences' phased implementation of DORN

Exact Sciences began their connectivity journey in 2015 with Practice Fusion, and in April 2023, expanded their connected EHR network via DORN to one of the industry's largest ambulatory EHR systems. Building on that momentum, Exact Sciences became the first to launch Veradigm EHR through DORN in January 2024—marking a pivotal step toward broader adoption across the healthcare landscape.

A phased rollout with extensive testing and pilot programs helped early adopters refine the system for powerful, reliable connectivity.

- Implementation timelines reduced by 90%
- IT complexities drastically lowered
- Seamless interface across multiple EHRs

CONTINUED ON P2



"With DORN, the vast majority of the phases required for each new group are eliminated. What used to take weeks is now turned around in just days. The biggest benefit is the reduction in our integration timeline and the freeing up of IT bandwidth."

— ERIC FRUHLING
SR. DIGITAL HEALTH STRATEGIST,
EXACT SCIENCES



CLIENT PROFILE

EXACT SCIENCES

Madison, WI

www.exactsciences.com

OVERVIEW

- Exact Sciences is a global leader in advanced cancer diagnostics, dedicated to improving patient outcomes through early detection and actionable insights.
- Headquartered in Madison, Wisconsin, the company is renowned for its groundbreaking Cologuard® test—a non-invasive stool DNA screening that identifies colorectal cancer in average-risk individuals aged 45 and older.
- Fueled by rigorous research, scientific excellence, and continuous innovation, Exact Sciences is shaping the future of early disease detection and precision oncology.
- In addition to its screening innovations, Exact Sciences offers a growing portfolio across the cancer care continuum, with solutions that support earlier detection, diagnosis, and treatment guidance.

VERADIGM SOLUTIONS

- Veradigm Diagnostic Ordering and Results Network (DORN)

CHALLENGES

- Traditional lab connectivity depended on point-to-point HL7 interfaces that could take up to 12 weeks to build, costing \$10,000–\$15,000 plus ongoing maintenance.
- Without standardized interfaces, manual fax-based workflows increased administrative overhead, slowed turnaround times, and introduced accuracy errors.
- Managing multiple individual connections necessitated constant updates to separate compendiums, further complicating operations and driving costs.

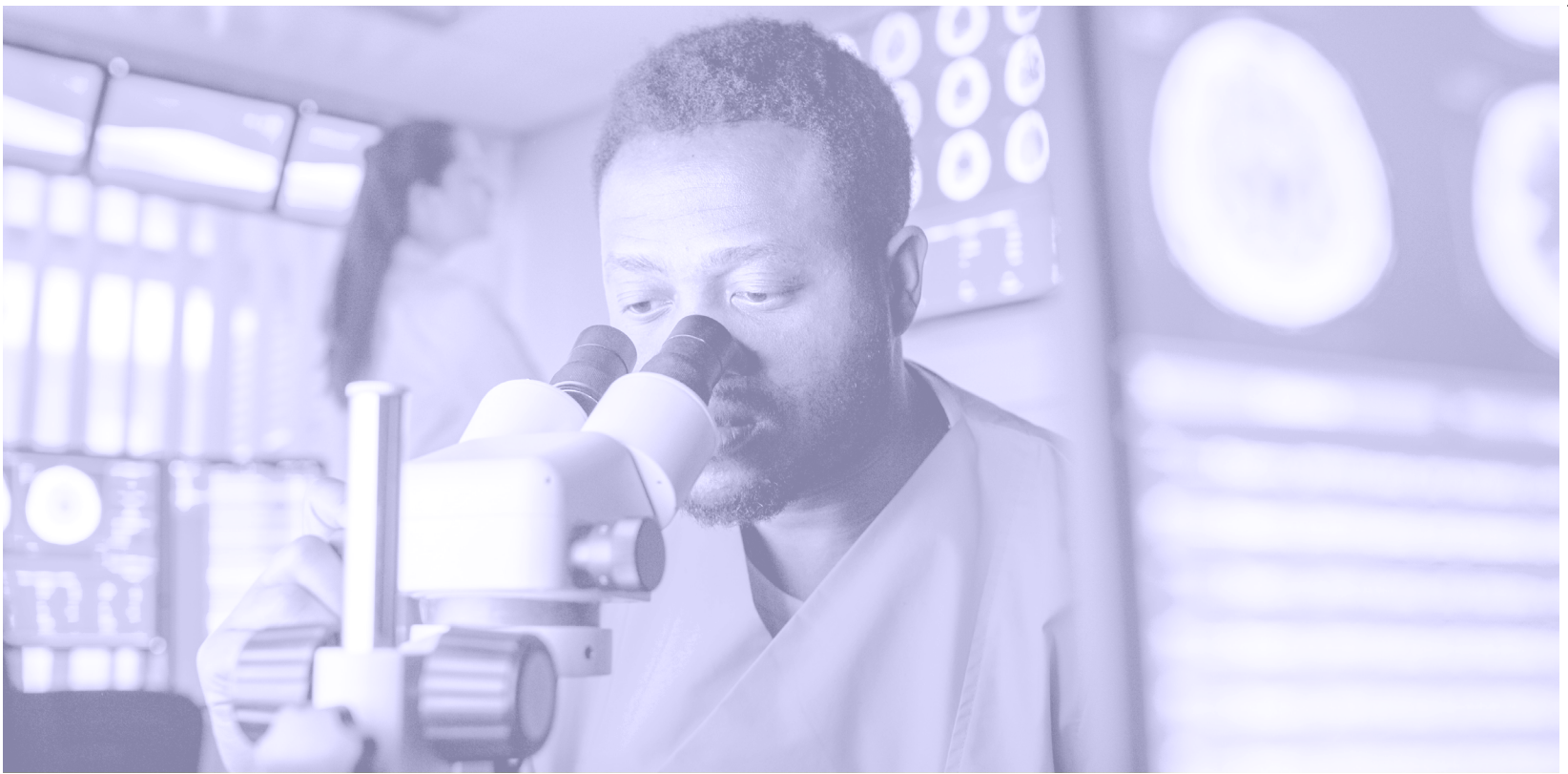
- For many smaller labs, point-to-point interfaces are too expensive, forcing them to rely on manual fax-based processes.

SOLUTION

- Veradigm helped Exact Sciences leverage DORN to replace fragmented, point-to-point interfaces with a streamlined cloud-based hub for faster, more scalable connectivity.
- Interfacing with Veradigm EHR (VEHR) via DORN, test order transmission and results reporting became fully automated. Beyond cutting processing time, IT workload, and complexity, it boosted order accuracy through standardized validation.
- Near real-time visibility allows providers to submit lab orders directly from their EHR, track orders, and easily retrieve results. This automation eliminates manual intervention and minimizes administrative burdens for improved care delivery.

OUTCOMES

- **VEHR specific outcomes:**
More than 120 active VEHR providers are now seamlessly interfaced, processing over 1,000 transactions per month, enabling faster, more efficient lab orders and results reporting.
- **Accelerated order volume growth:**
 - **October 2024–April 2025:** Orders increased by 117%, while results surged by 166.6%.
 - **November 2024–April 2025:** Orders grew by 72%, and results increased by 106%—demonstrating the rapid adoption and efficiency of DORN's automated workflows.
- **Operational efficiency gains:**
DORN reduced integration timelines from 12 weeks to days, considerably lowering IT workload. These cost savings provide a scalable, long-term solution for labs and radiology centers seeking streamlined provider access.



FROM P1

To support adoption, Exact Sciences provided an onboarding guide to help clinics get started with the DORN connection. Additionally, a tip sheet was offered to educate staff on ordering and resulting workflows post-implementation, ensuring a smooth transition and effective system utilization.

As Eric Fruhling, Sr. Digital Health Strategist at Exact Sciences, explains: "With DORN, the vast majority of the phases required for each new group are eliminated. What used to take weeks is now turned around in just days. The biggest benefit is the reduction in our integration timeline and the freeing up of IT bandwidth."

From legacy systems to accelerated connectivity

Since deploying DORN, Exact Sciences has expanded to 800 total electronic connections across multiple EHR platforms, supporting an average of 9,900 electronic results per month.

Without DORN, an estimated 80% of these connections would still depend on fax. Additionally, legacy point-to-point systems cost more, take longer, and operate inadequately.

Beyond efficiency gains, DORN's automated workflows cut administrative burdens and lowered IT costs, so that Exact Sciences could focus on delivering better patient care instead of managing thousands of complex interfaces. "DORN has completely trans-



"DORN has completely transformed the way our IT team operates. Without tedious manual processes, we can focus on strategic, patient-centered innovation."

— ERIC FRUHLING
SR. DIGITAL HEALTH STRATEGIST,
EXACT SCIENCE



formed the way our IT team operates. Without tedious manual processes, we can focus on strategic, patient-centered innovation," Eric commented.

The future of lab connectivity

Exact Sciences' radical shift with DORN demonstrates that any lab or radiology center can adopt this progressive model to unlock scalable connectivity. Rather than contending with disjointed interfaces, error-prone manual order entry, and prohibitive costs, labs now enjoy a unified solution that greatly expands provider access and increases operational efficiency. In addition to automating workflows and minimizing errors, it consolidates interfaces to pave the way for a new era of seamless, high-performance connectivity in healthcare.